

Appendix

How to Find your Ethernet Address

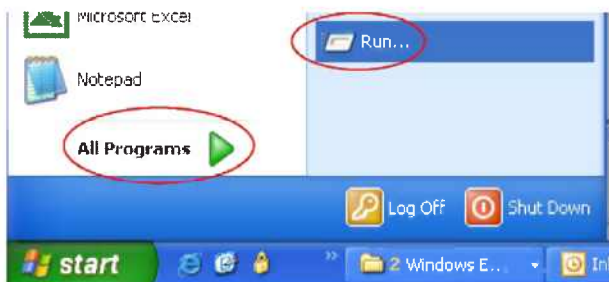
Several GE Healthcare software products present the Ethernet address during installation, start up or by using a separate tool. Here is a general description on how to find the ethernet address without using any of these tools.

Important. Use the Ethernet address for the computer where the license file will be placed. The placement may depend on the license type:

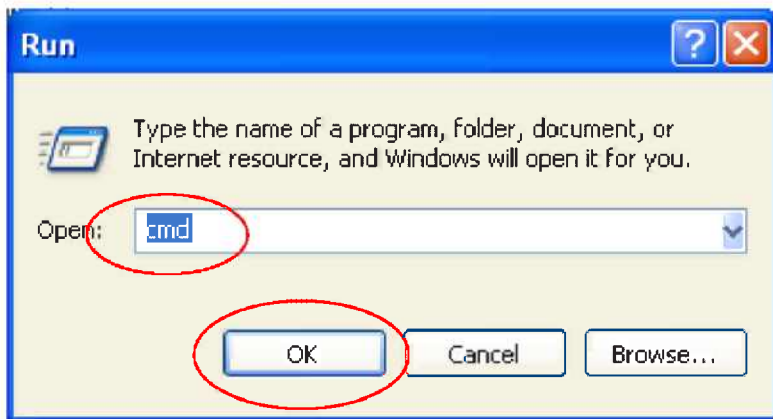
1. Concurrent license (a.k.a. floating), use Ethernet address for the computer where the license server is installed.
2. Node locked license, use Ethernet address for the computer where the software application is installed.

Get Ethernet address

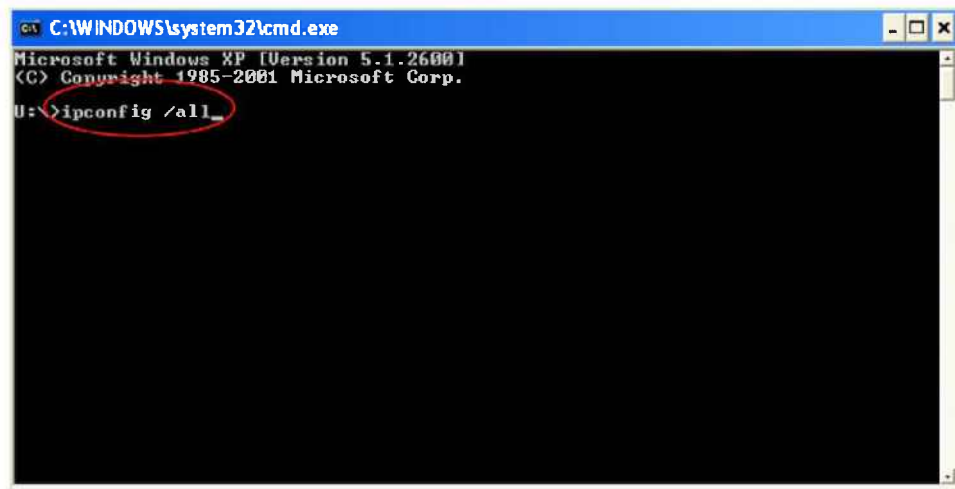
1. Start->Run



2. Type cmd and click **OK**



3. In the Command Window type "ipconfig /all" and press enter.



```
C:\WINDOWS\system32\cmd.exe
Microsoft Windows XP [Version 5.1.2600]
(C) Copyright 1985-2001 Microsoft Corp.
U:\>ipconfig /all
```

4. The response should contain several parameters for the network. Look for the line **Ethernet adapter Local Area Connection**. Then look for the **Physical Address**. This number is the Ethernet address. In the example below it is marked in white. It must be used as a straight number without "-". In the example below it is **00aa11bb22cc**.



```
Subnet Mask . . . . . : 255.255.255.0
Default Gateway . . . . . :
Ethernet adapter Local Area Connection:
    Connection-specific DNS Suffix . : clients.em.health.ge.com
    Description . . . . . : Broadcom NetXtreme 57xx Gigabit Controller
    Physical Address. . . . . : 00-AA-11-BB-22-CC
    Dhcp Enabled. . . . . : Yes
    Autoconfiguration Enabled . . . . . : Yes
    IP Address. . . . . : 192.168.254.20
    Subnet Mask . . . . . : 255.255.255.0
    Default Gateway . . . . . : 192.168.254.254
    DHCP Class ID . . . . . : efe
    DHCP Server . . . . . : 192.168.254.140
    DNS Servers . . . . . : 192.168.254.140
    : 192.168.254.44
    Primary WINS Server . . . . . : 192.168.254.41
    Secondary WINS Server . . . . . : 192.168.254.12
    Lease Obtained. . . . . : den 12 november 2008 11:02:12
    Lease Expires . . . . . : den 12 november 2008 19:02:12
U:\>
```